

Metal In Action

RESIDENTIAL BUILDING, SHEFFIELD SOTECH LIMITED



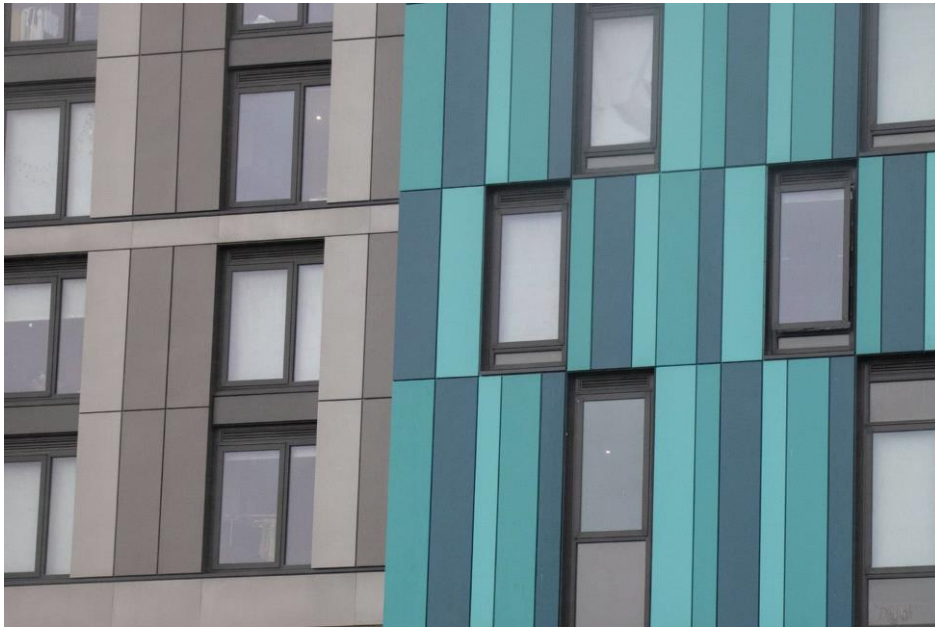
Some 5,500 square metres of Optima TFC in solid aluminium PPC has been used in the construction of Sheffield's New Era Square residential building in Sheffield.

Set to be the city's major new urban destination, New Era Square is a £66 million project, which attracted several multi million-pound investors from China. The project signifies a huge boost in recent investment from China into the Sheffield City Region.

The tower in the square is set to be the joint fifth tallest in Sheffield and will have a barcode hidden in the black strip façade which spells out 'New Era'.

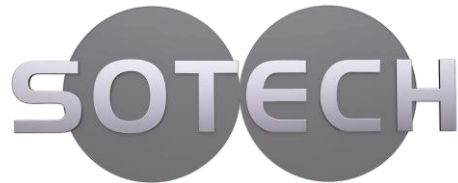
Sotech was able to advise in the colour palette for the tower. The intention was to create an effect that looked like the edge of glass, most glass contains iron oxide as an impurity which gives the glass as slightly green hue. The colours selected were Axalta RAL: 5018, 5021 and 5020 with 85 percent gloss to give a reflective appearance.

The other colours selected were YW216G, YW355F and YW359F; these are part of the Interpon D2525 texture range and colours have a sand-blasted appearance.



Phase 1 of the scheme has been recognised as ‘a vital stage in the regeneration of Sheffield city centre’. Sotech is pleased to be part of the second phase of the development which is now underway and will include a cluster of student apartments, restaurants, retail and office accommodation around a central plaza.

Architect	Hadfield Cawkwell Davidson Ltd
Main contractor	Bowmer & Kirkland
Installer	Keyclad Limited
System	Optima TFC
Material:	Solid aluminium
Finish	PPC; Green RAL - 5018, 5021 and 5020 85% gloss PPC; YW216G, YW355F and YW359F
Location	Sheffield



www.sotech-optima.co.uk