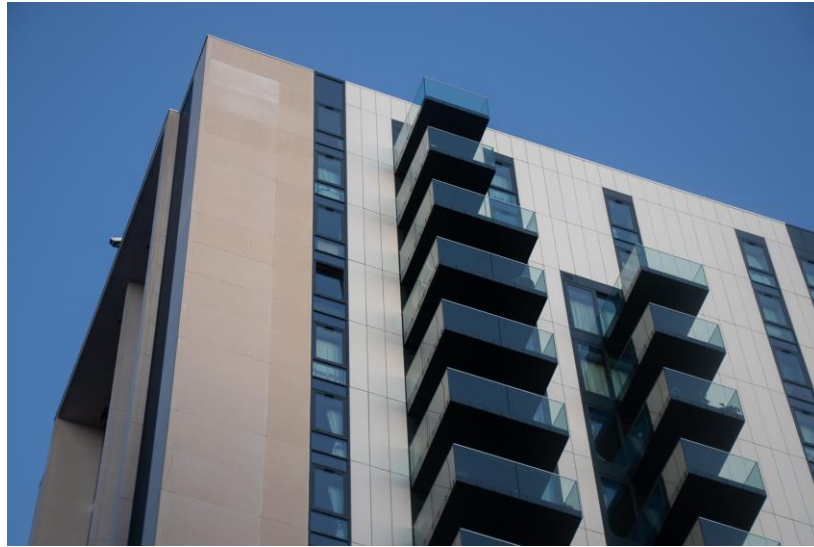


Metal In Action

RESIDENTIAL DEVELOPMENTS, WEMBLEY SOTECH LIMITED



Some 6,500 square meters of Optima FC in an aluminium 1050 Grade with a polyester powder coating finish has been used in the completion of Alto NW06 apartments in Wembley, London.

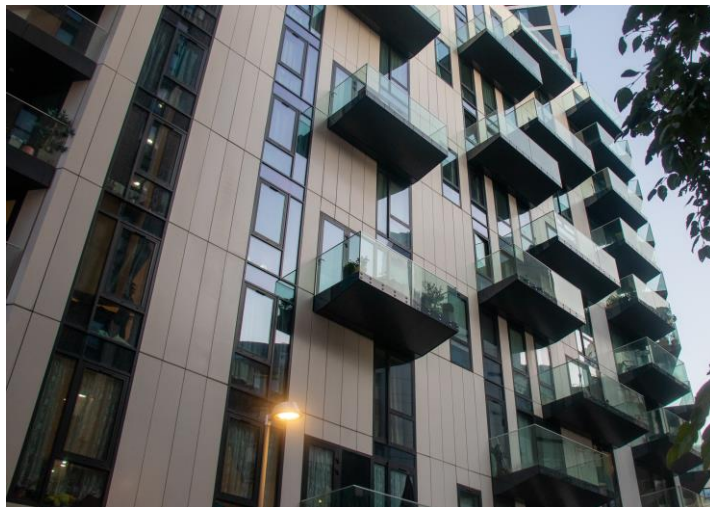
Located in Wembley Park, Alto NW06 is one of London's stunning new residential developments. Consisting of one, two and three-bedroom apartments, the building was designed by architect Flanagan Lawrence and installed by OCL Facades.

Optima FC was chosen as the client required a secret fixing system. The 2mm gauge alloy was adopted to suit the panel requirements whilst keeping excess weight to a minimum. 3mm aluminium was adopted to higher impact areas such as around doors and low-level cladding.



As part of the project, Sotech produced a finite element analysis to prove that the majority of the panels could be manufactured from 2mm alloy whilst keeping deflection within acceptable ranges.

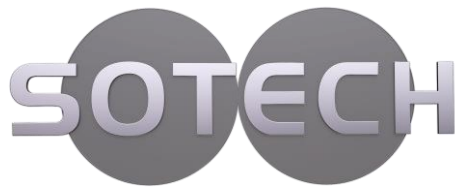
The outcome is clean and striking, with the uniform cladding modules giving a clean aesthetic to the project, which has since won Considerate Constructors Scheme National Awards – 2017 Silver & 2018 Bronze. Valued at just over £13 million, the Alto NW06 apartments were completed in Summer 2017.



Architect	Flanagan Lawrence
Main contractor	Wates Construction
Installer	OCL Facades
System	Optima FC
Location	Wembley, London

Benefits of aluminium:

- Material guarantees for our range of aluminium cladding and aluminium façades are available upon request.
- When the material is equipped with a protective layer (anodised layer or polyester powder coating) it is resistant against all kinds of weather.
- 9% recyclable and using only 15% of the energy used in the original manufacture to recycle the product.



www.sotech-optima.co.uk