



LEARNING ON THE GO...

The Metal Cladding and Roofing Manufacturers Association (MCRMA) discusses its free, flexible online learning service, which is open to anyone seeking to develop their knowledge within the metal building envelope sector.

MCRMA has reinforced its commitment to promoting best practice in the roofing and cladding industry with its range of online Continuing Professional Development (CPD) courses accredited by the CPD Certification Service.

The CPDs are ideal for busy professionals; they are flexible and provide 'learning on the go' as the course material can be studied both online and offline, on mobiles, tablets and print. This series of informative self-study training delivers good learning value and is recognised as a training with CPD value. There is an online assessment component to verify knowledge and following the successful online completion of a CPD, a certificate can be downloaded and printed for the user's personal records.

MCRMA's online CPD programme is open to anyone seeking to develop their knowledge and skills within the metal building envelope sector. Each module also offers members of professional institutions an opportunity to earn credits towards their annual CPD requirement.

The CPD portfolio provides guidance and training on a range of common industry topics and are based on MCRMA's guidance documents which have been drafted by industry experts from across the MCRMA membership.

In the CPD covering snow loading, the user will learn to distinguish between different types of snow load; understand the factors that affect snow loading; appreciate the recommended calculation procedures and be able to distinguish between designing to the British Standard and the Eurocode. In addition, the user will learn how to specify the correct cladding and supporting structure for a specific building and understand the importance of load paths and distribution for pitched roofs.

The CPD on wind loadings introduces the key elements that need to be taken into account when calculating wind loadings on the roofs and walls of industrial and commercial buildings.

Successful completion of this CPD should ensure that the user understands how wind forces work on buildings, the factors which can influence the wind loading and the zonal changes that can occur around the building envelope.

The CPD module which examines the site installation of insulated roof panels outlines the factors that need to be taken into account when installing an insulated roof panel system. The performance of any building envelope is highly dependent on a number of considerations and it is imperative that the work is carefully planned to ensure that it can be done in a safe manner and in line with good site practice.

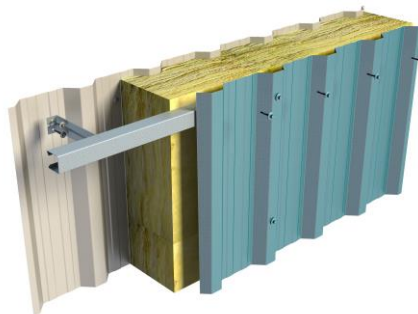
Staying with roof construction, the effective sealing of end laps is also covered in a CPD module. The CPD covers the following combinations - profiled metal to metal; profiled metal to rooflight; sandwich panel to panel and sandwich panel to factory assembled rooflight.

Roof construction can be one of the most hazardous operations because of the potential for falls and the CPD module *Working at height: a fall prevention and safety checklist* introduces the main topics that need to be considered to ensure that the specific requirements for access, inspection and maintenance at roof level are fully understood and that safe work at height must be considered from the outset on any project.



Fig 1: From GD10 Working at heights module: Illustration of cable system and walkway

The CPD module *Mineral wool insulation installation: best practice guide* sets out an overview of the factors that need to be taken into account in the storage, handling and installation of mineral wool insulation in built-up metal roof and wall cladding systems. The CPD examines design factors and also includes guidance on both roof and wall installation and standards of workmanship.



From GD28 Mineral wool installation module: Typical trapezoidal twin skin wall system

The latest addition to the CPD portfolio covers the specification of industrial pre-laminated membrane gutters and factory assembled insulated pre-laminated membrane gutters for metal-based roofing systems for industrial, commercial and warehouse applications.

The CPD defines the terminology used for the two systems under consideration. In addition, the module provides advice about structural design, design capacity and thermal performance. It also deals with the thermal welding of the polymeric membrane and the importance of carrying out sample QA peel tests to set welding parameters during the installation process.

Other modules in the CPD portfolio cover the installation of side rails and purlins; serviceability states and deflections criteria and manufacturing tolerances for profiled metal roof and wall cladding.

The CPDs are available on the MCRMA web site at www.mcrma.co.uk/online-cpds

This article first appeared in RCI magazine, October 2019

DISCLAIMER

Whilst the information contained in this publication is believed to be correct at the time of publication, the Metal Cladding and Roofing Manufacturers Association Limited and its member companies cannot be held responsible for any errors or inaccuracies and, in particular, the specification for any application must be checked with the individual manufacturer concerned for a given installation.

Information provided by the MCRMA or contained within publications and articles which are made available in any form (mechanical, electronic, photocopying or otherwise) cannot be used or cited as a means of ensuring that a material, product, system or assembly is compliant with Building Regulations.

©2019 MCRMA - 106 Ruskin Avenue, Rogerstone, Newport, South Wales NP10 0BD
01633 895633 info@mcrma.co.uk www.mcrma.co.uk