

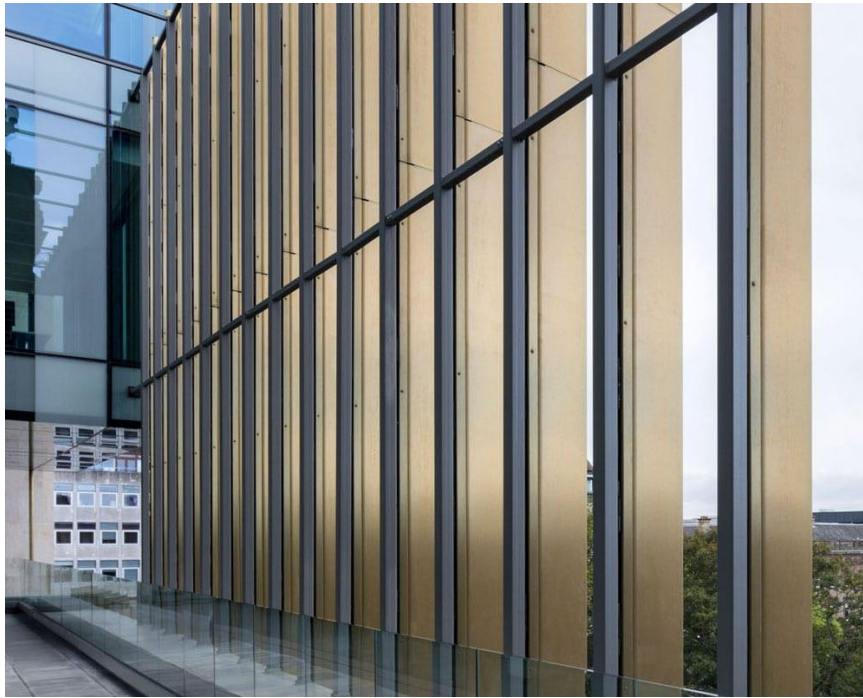
**ST ANDREW'S SQUARE, EDINBURGH**  
**SOTECH LIMITED**



Over 700 Bushed Nordic Royal Copper fins have been added to the commercial and retail development in the historic St Andrew's Square in Edinburgh.

Chosen because it changes the appearance of the building as the sun moves across the sky, each copper fin had to be rotated one degree further than the previous fin in order to create the casting shadow look.

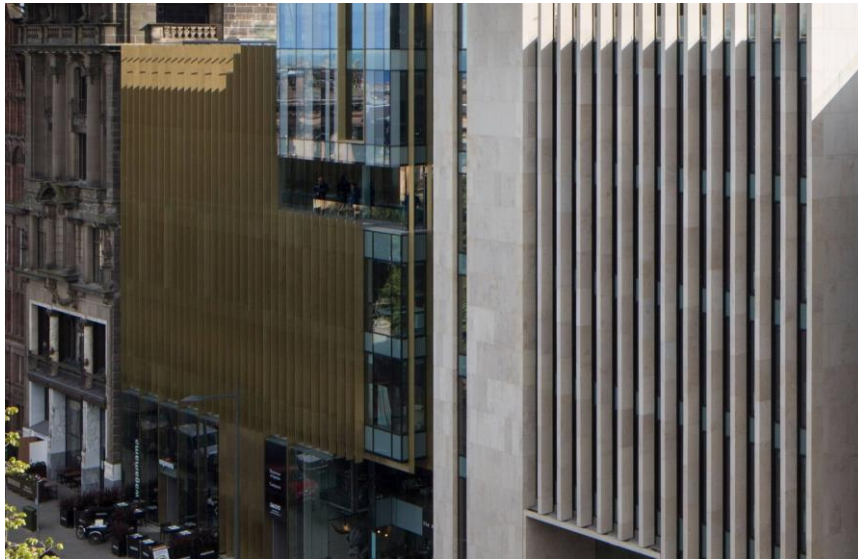
This posed an exciting challenge for Sotech's technical and manufacturing team as they not only had to create a bespoke jig to manufacture the fins, but care had to be taken to ensure the direction of the 'grain' was maintained across the final look. The team therefore worked closely alongside the team at installers Charles Henshaw to agree the manufacturing technique and ensure the project ran smoothly.



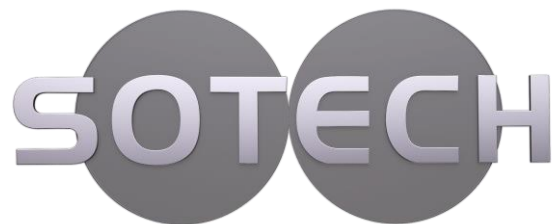
In order to further guarantee the right look on site, several in-house tests were also carried out before the project began to ensure the fins were to the client's specification.

Dave Swithenbank, design technician at Sotech said "This was a project I was very proud to work on and have even visited the site twice in my own time to show the finished project to family. The outcome has been fantastic!"

The final design comprises 9,300 square metres of Grade A office space, 6,500 square metres of leisure/retail space and a suite of luxury apartments.



Architect	Hoskins Architect
Main contractor	Bowmer & Kirkland
Installer	Charles Henshaw
System	Sotech Optima bespoke fins'
Material	Royal Copper
Finish	Bushed Nordic Royal Copper
Location	Edinburgh



[www.sotech-optima.co.uk](http://www.sotech-optima.co.uk)