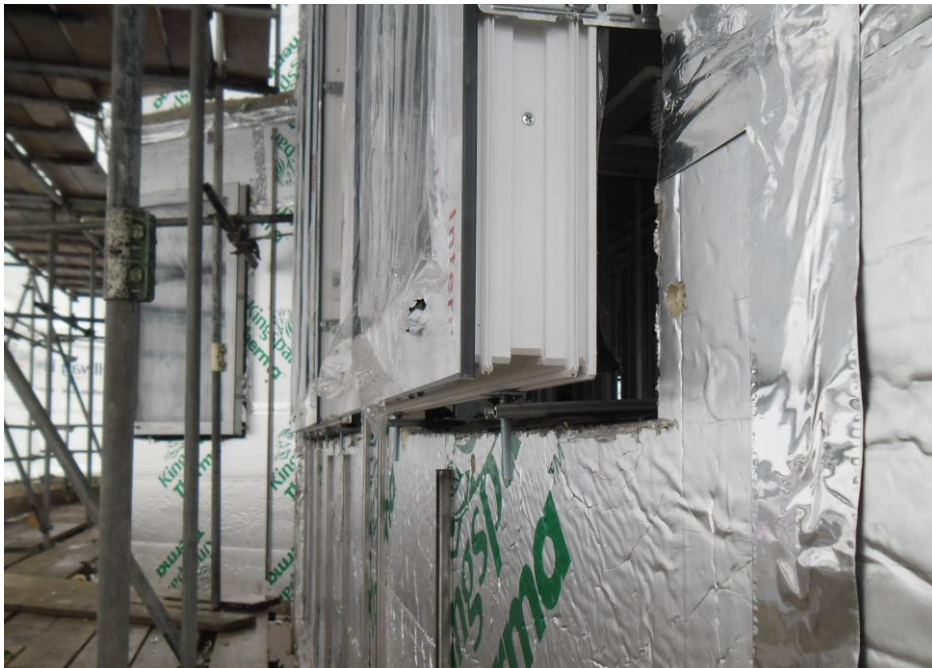


## HANWELL LOCKS, WEST LONDON

### SFS intec



SFS intec has supplied 900 window bracket systems – the JB-DK – for the £3 million Hanwell Locks construction, which comprises 12 private homes, all built to achieve Code 4 Sustainable Homes status.

Made up of jamb and sill brackets and secured from the light steel frame inner wall leaf, the JB-DK bracket system was attached to the window unit at numerous vital support points. Set at a cantilever of 120mm, the system securely set the windows over the external insulation zone while accommodating the dead loads and imposed loads acting on the frames. By installing the windows over the insulation, the thermal efficiency is dramatically improved - a significant element in helping to achieve Code 4 Sustainable Homes.

Tony McLaughlin, Company Director at Frames Direct Ltd, said: “We’ve noticed a real increase in the specification of external wall insulation and triple glazed windows, given their ability to substantially improve a building’s energy efficiency, but until now, we’ve not had a bespoke engineered support system which can guarantee the security of the windows.

Triple glazed units in particular, are much heavier than typical double glazed units, so the fact that the JB-DK can hold up to 132kg in weight is ideal. Especially given the timings of the new build, it meant that the windows would be installed and then left to hang there until the outer leaf brick layer was installed, so it was key that we could ensure their stability for that time. As well as that, the JB-DK was easy to handle and install – I’d certainly use it again.”

With warranties available for a variety of applications - from commercial through to longer residential requirements - the JB-DK system passed IFT Rosenheim testing for static positive and negative pressure with  $\pm 2000$  Pa, non-permanent additional load up to 800 N on an open sash and also simulated use with 10,000 leaf/sash movements.

Jamie Lewis, Off Site and Facades Business Development Manager at SFS intec, said: “There are currently few suitable solutions available on the market to enable the fixing of windows over insulation zones, meaning that installers are often left to fix them in place using substandard methods. This naturally has concerning and potentially costly consequences, resulting in maintenance issues for years. However, our JB-DK bracket system is enabling the trade to confidently fix the windows in place, without the risk of failure.””

Hanwell Locks residential living was built in two stages – first, six 3-bedroom houses were built and the second stage, more recently, consisted of six 4-bedroom houses.

**SFS** intec

[www.sfsintec.biz/uk/](http://www.sfsintec.biz/uk/)

