

Assessed CPD Seminar Programme

As a long-established member of the RIBA CPD Providers Network, we take our responsibility to educate very seriously and are committed to providing Continuing Professional Development to the highest standards.



We have developed a range of CPD seminars, all of them successfully assessed by the Providers Network, which offer genuine insight into key design and installation issues affecting all our main operating sectors.

Typically, we will make a CPD seminar presentation in your practice, usually in the lunch break. We can however, present at any time to suit your requirements and welcome opportunities to simultaneously present to multiple practices, or industry bodies.

All personnel attending an Ash & Lacy Building Systems technical seminar will automatically receive a CPD certificate.

Should any of the CPD Seminar modules interest you, please contact us today

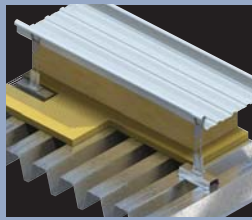
0121 525 1444
sales@ashandlacy.com

giving the seminar title(s) you would like to see and three suggested dates.



Zip your way to a sustainable future

This is a practical consideration of zip up built up systems, to enable you and your team to design, and specify zip up Standing Seam Systems. The presentation covers areas including models of how the discussed systems are constructed to show depths of its construction.



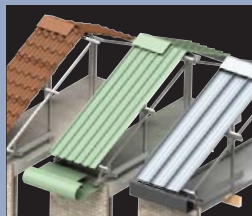
The Art of Environmental Perimeter Detailing

Explaining how air tightness details can be achieved in a number of differing locations around the building, based on a plywood deck, liner sheet, structural tray, and structural decking, whilst providing both a non-acoustic and acoustic solution.



Freedom of Expression

A technical seminar on multi-layer rainscreen cladding systems, covering issues such as how you can achieve optimal panel flatness and still stay within your budget.



Positive Legacy via Intelligent Investment

This is a practical consideration of good practice in lightweight structural frame design & installation of flat-to-pitch over roof conversion systems.



Good Practice in Lightweight Structural Frame: Design & Installation over Existing Roofs

An overview of lightweight over-roofing construction techniques

A **ASH & LACY**
ashandlacy.com

West Bromwich Bromford Lane, West Bromwich,
West Midlands B70 7JJ
Tel: **0121 525 1444** Fax: **0121 525 3444**

also at: **London** Gateway 3, Davis Road, Off Cox Lane,
Chessington, Surrey KT9 1TD
Tel: **020 8391 9700** Fax: **020 8391 9701**

Glasgow Unit 4a, Albion Trading Est, South Street,
Whiteinch, Glasgow G14 0SY
Tel: **0141 950 6040** Fax: **0141 950 6080**

E-mail enquiries to: **sales@ashandlacy.com**