

---

## **SYSTEM EDGE PROTECTION**

---

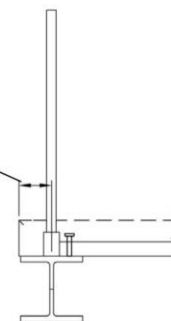
**THIS DOCUMENT IS NO LONGER IN PRINT AND IS INCLUDED ON THE WEB SITE FOR REFERENCE ONLY  
PLEASE REFER TO AN MCRMA MEMBER FOR UP TO DATE INFORMATION**



■ Edge protection on centre of beam

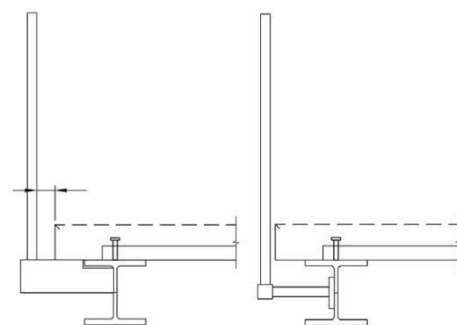
- Ⓒ Edge Protection on centre of beam does not allow access to fix edge trim outside of the beam centre.

No way of accessing area with tools to fix deck or edge trim.



■ Cantilevered edge protection

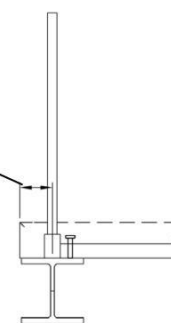
Edge protection installed cantilevered from beam allows good access for fixing deck, edge trim and studwelding.



■ Edge protection on centre of beam

- Edge Protection on centre of beam does not allow access to fix shear studs to the top of beam.

No way of accessing area with tools to fix shear studs.



■ Edge protection on centre of beam

Where edge protection has to be centre of beam the edge protection to be installed at 460mm above deck level to allow fixing of edge trim.