

---

# **MATERIAL LOADING OUT AND POSITIONING GUIDELINES FOR PRINCIPALS AND SUB-CONTRACTORS**

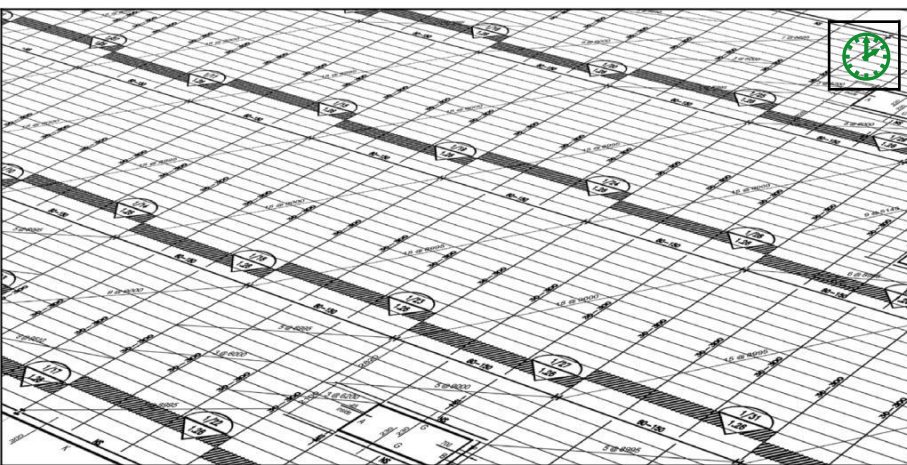
---

**THIS DOCUMENT IS NO LONGER IN PRINT AND IS INCLUDED ON THE WEB SITE FOR REFERENCE ONLY  
PLEASE REFER TO AN MCRMA MEMBER FOR UP TO DATE INFORMATION**



■ **Stacked decking packs**

- NEVER double stack decking packs
- If decking packs are double stacked, each sheet from the top pack will have to be double handled, sheet by sheet onto an adjacent area. This will involve unnecessary manual handling and expose the decking gangs to the risk of falling into nets below



■ **Loading out materials on framework and packs positioning on beams**

© Decking packs are ALWAYS to be loaded out as shown on deck General Arrangement (GA) layouts.

© Paint stripe on the side of each pack must always point towards the setting out point shown on decking layout drawings.

© If for any reason the decking packs cannot be loaded out as detailed on the deck drawings, the deck contractor representative MUST be informed

• Edge trim bundles to be loaded out as detailed on drawings.

• Studs must be lifted to level and area using mechanical lifting devices (Crane/Forklift) to suit stud welding programme (Wherever possible).

• NEVER overlap ends of decking packs

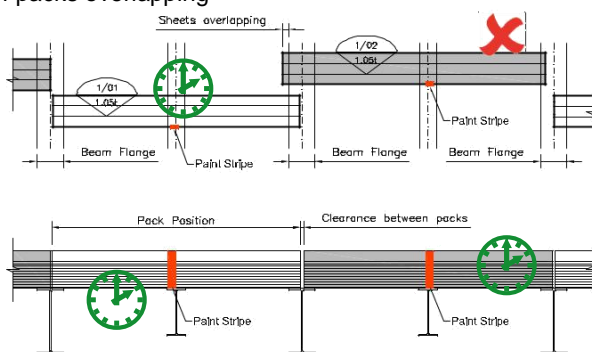
• If packs overlap, the adjacent bay cannot be decked until the obstructing pack has been moved (sheet by sheet) involving unnecessary manual handling.

• **Failure to follow this will involve unnecessary manual handling and increase the risk of injury to decking operatives. This could also result in enforcement action from the HSE.**



Paint Stripe

Plan - Position of packs overlapping



Elevation - Position of packs not overlapping